

SERIAL NUMBER 11028, HEAD GAP IS .0015, REBUILT 1992

ALL MACHINES HAVE THE FOLLOWING;Z

STOCK REEL, 14 FOOT WITH ENCLOSURE

STOCK STAND

NOISE TAMER, NEW STYLE WITH POCKET FOR DOOR

PICKOFF

BACK FINISH

CHIP CONVEYOR

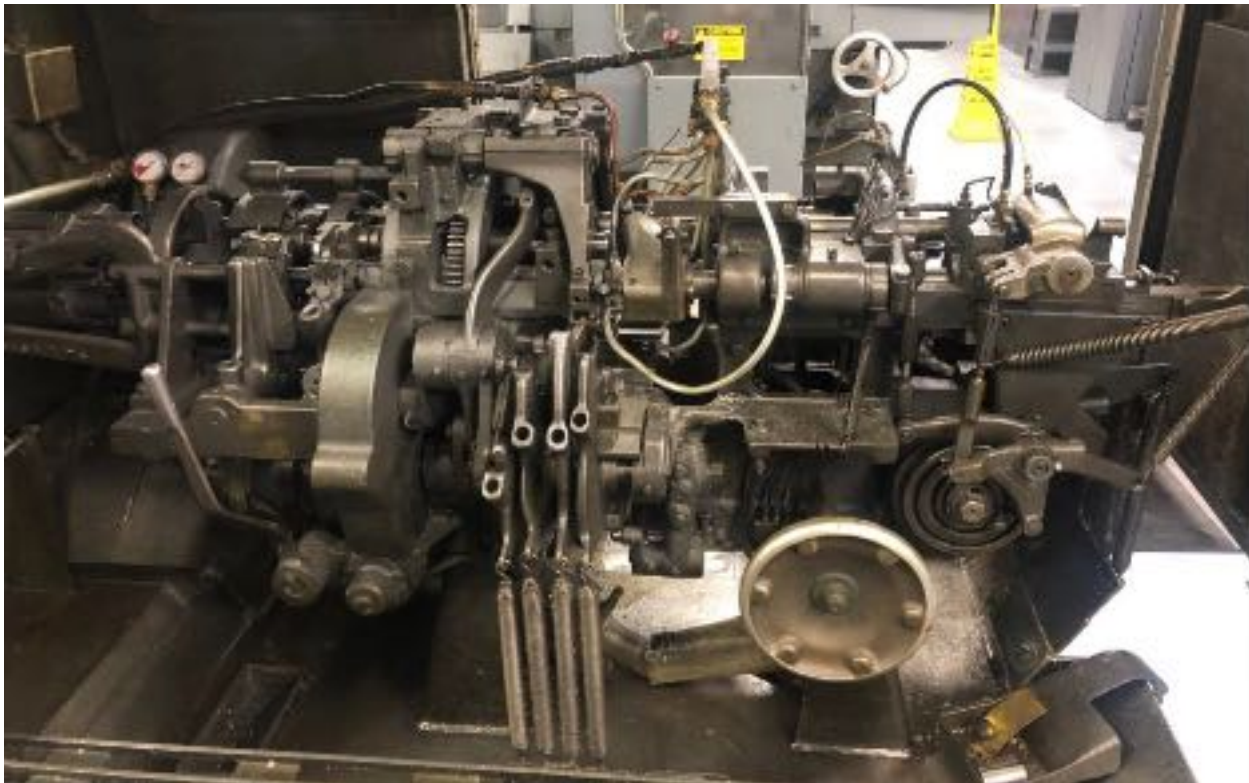
CROSS SLIDE TOOL HOLDERS

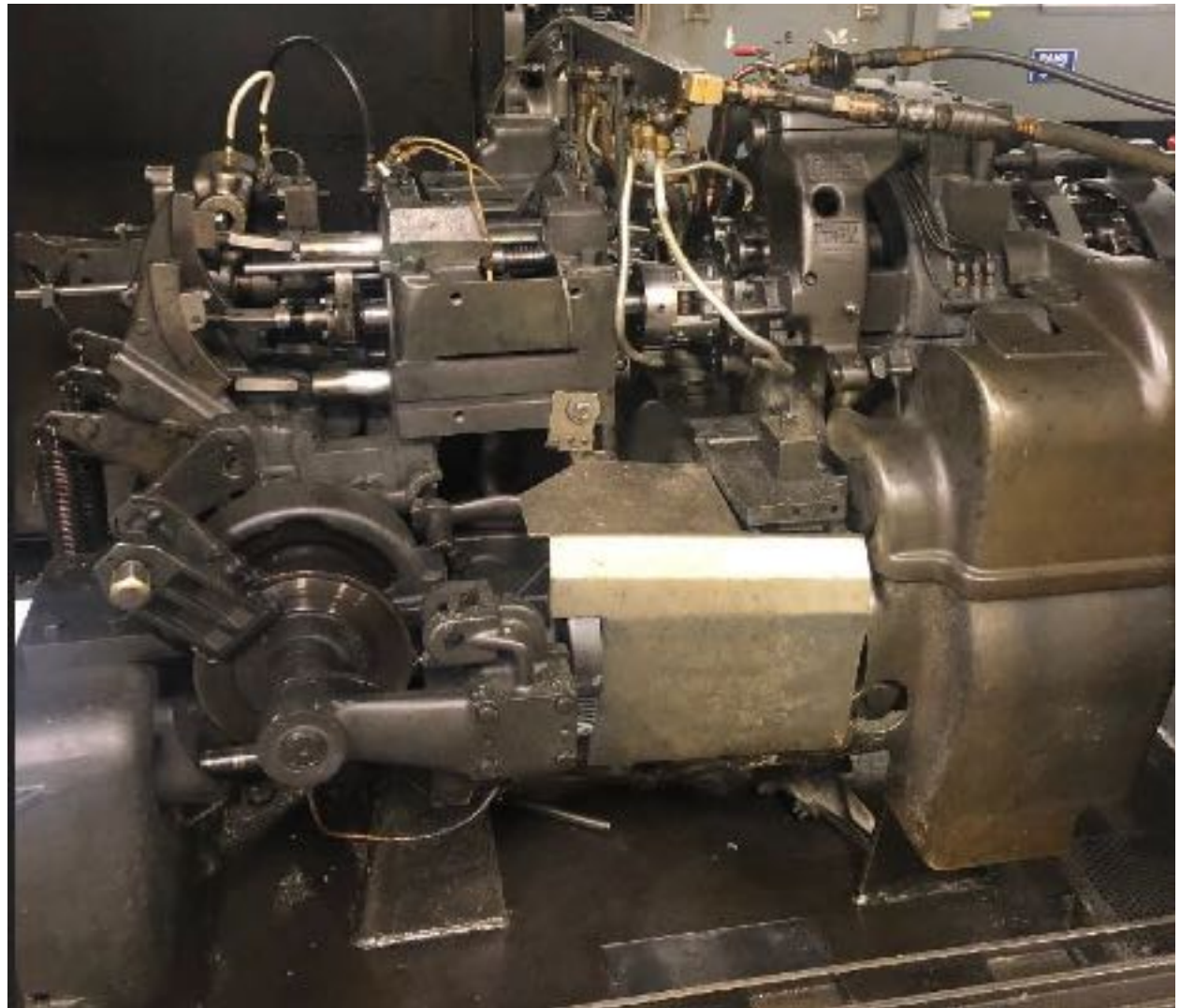
END WORKING TOOLS

CAMS AND GEARS AS MOUNTED

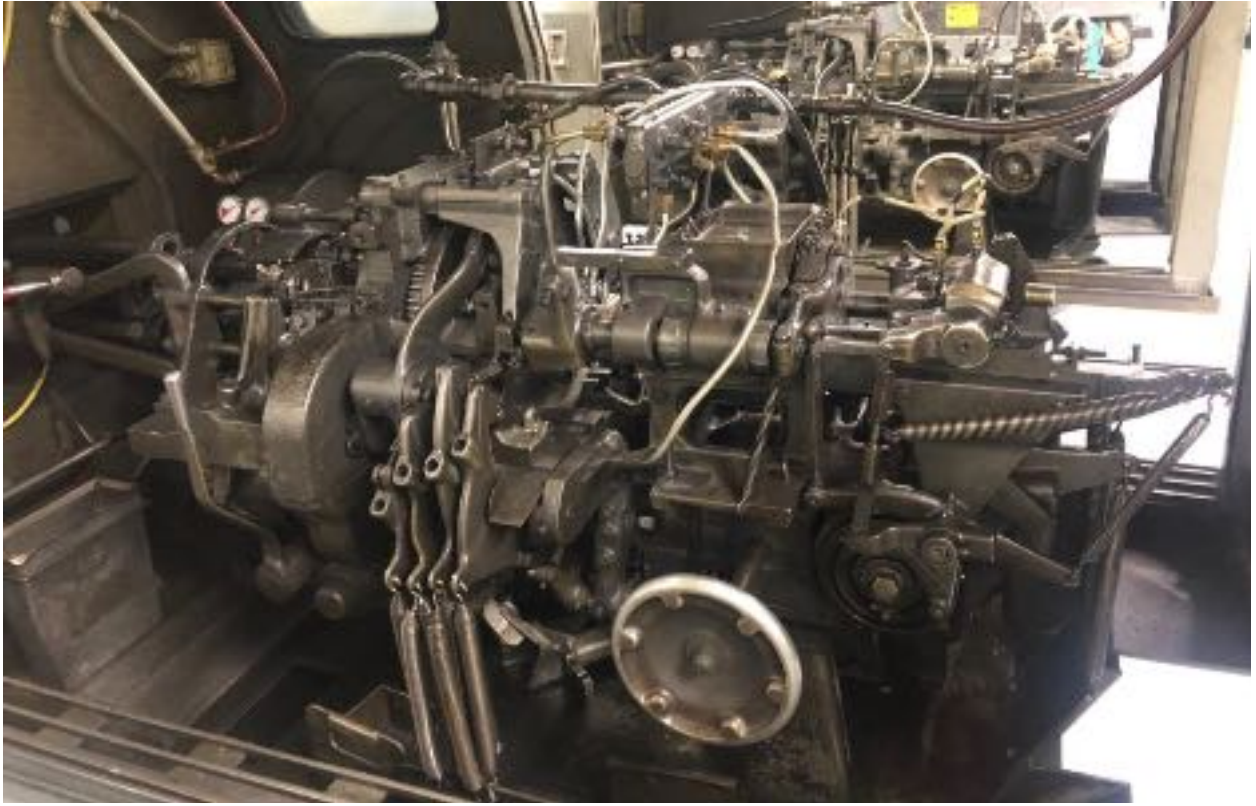
TWO MACHINES COME WITH THREADING, CAN SUPPLY THREAD ROLLING FOR THE OTHER THREE OR SUPPLY THE THREADING ATTACHMENTS.

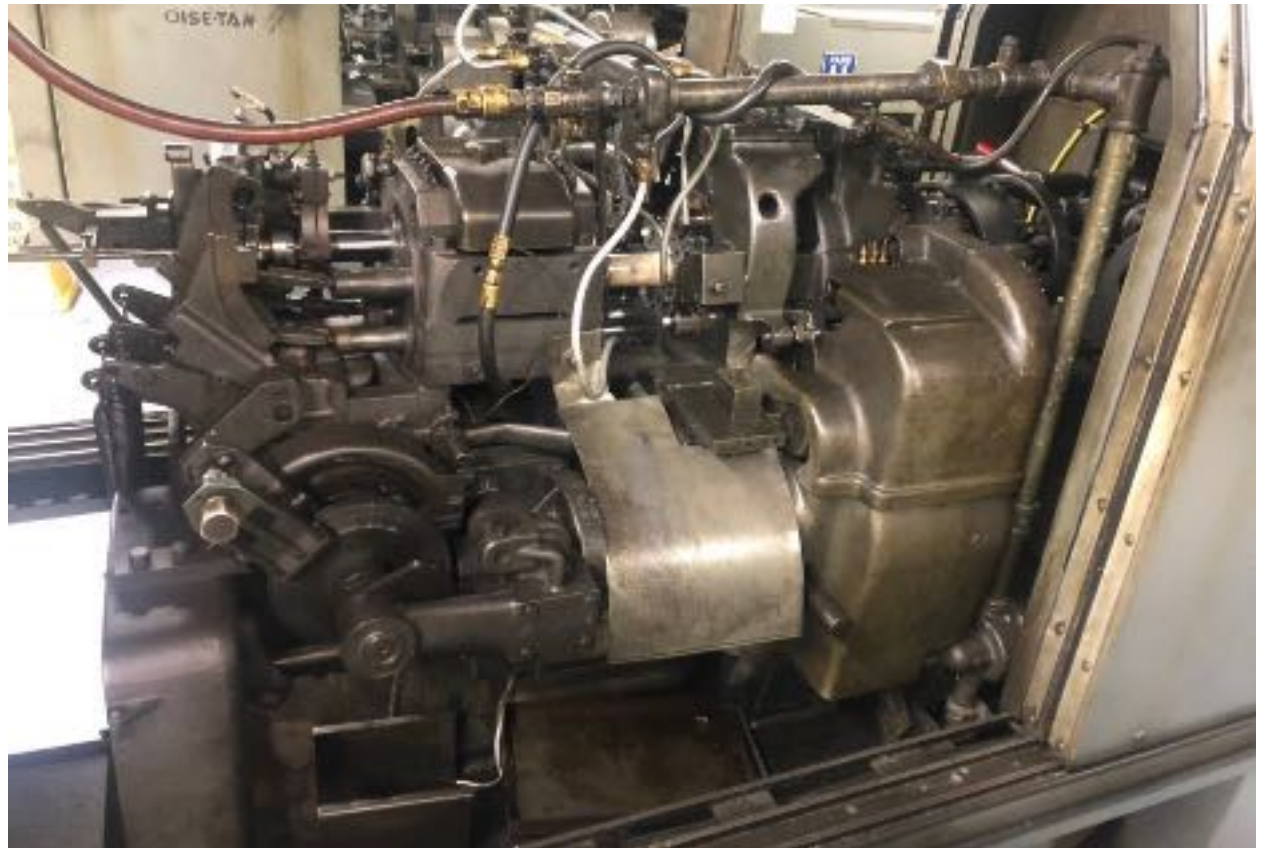
MOTOR COVER



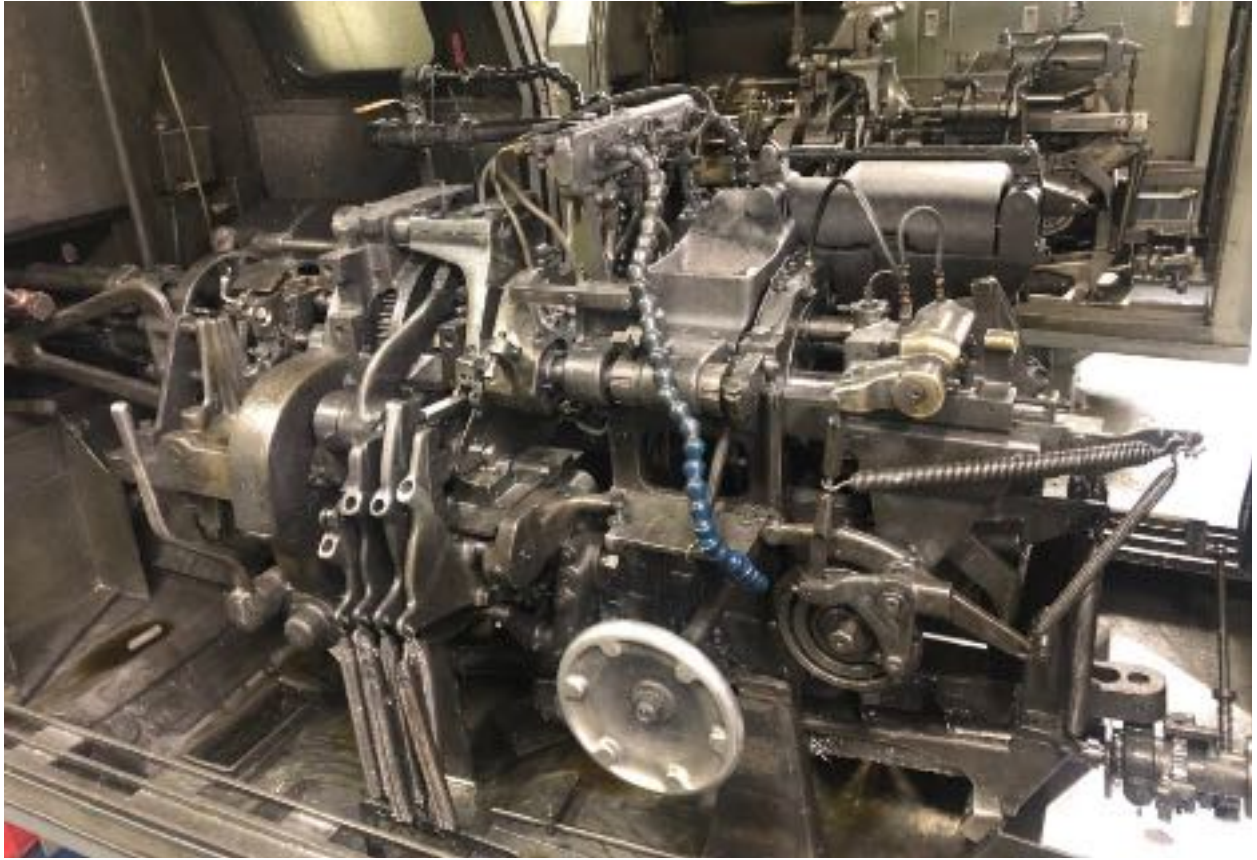


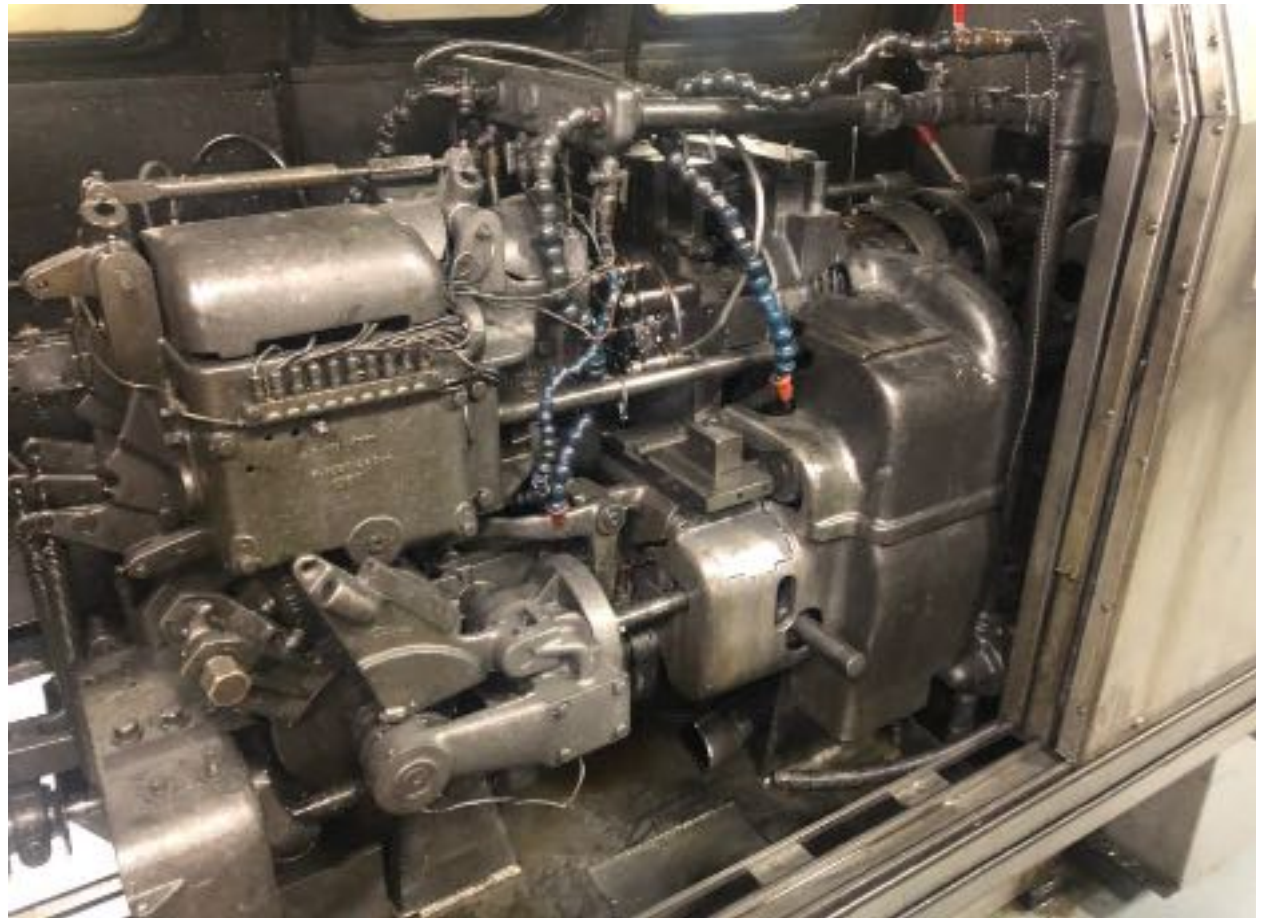
S/N 11064, HEAD GAP IS .0025, REBUILT 1992





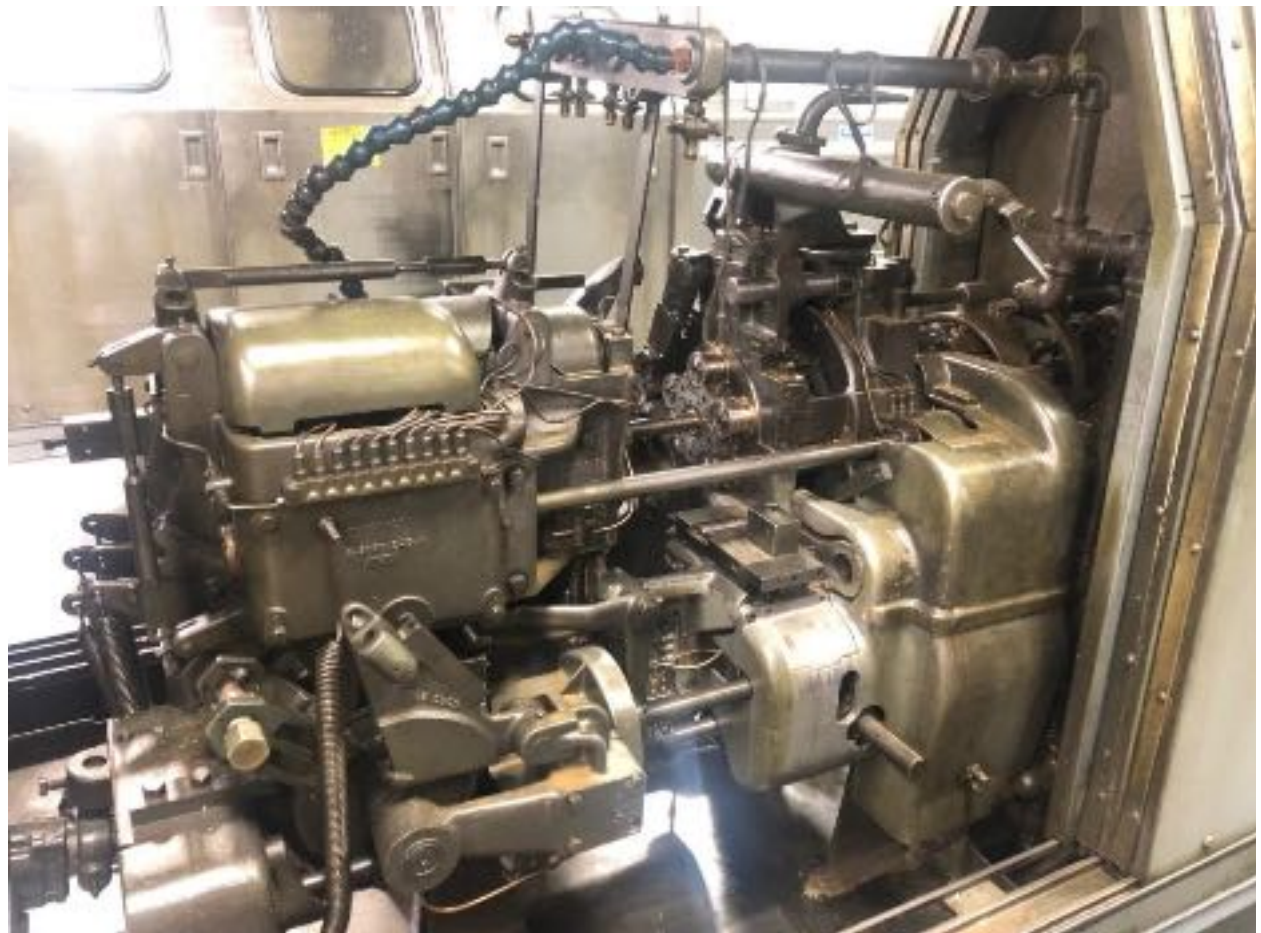
S/N 13361, HEAD GAP IS .0025,





S/N 13362-L, HEAD GAP IS .0045, HAS THREADING, PICKOFF IS OFF MACHINE BUT WILL BE WITH THE MACHINE.







S/N 5123, HEAD GAP IS .002, REBUILT 1994



